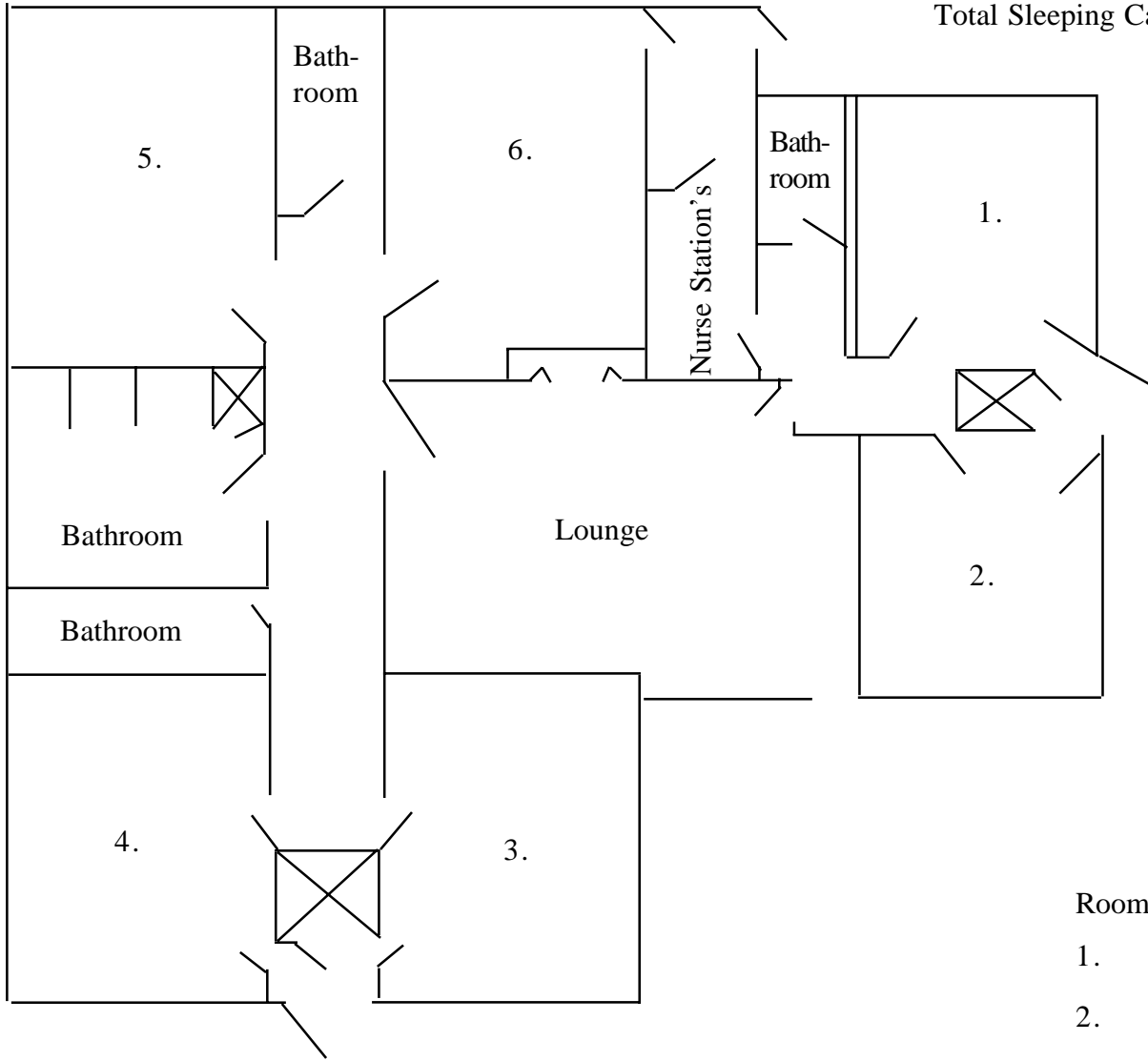


FLOOR PLAN FOR HOLLY HOUSE

Total Sleeping Capacity: 52



Room One

- 1.
- 2.
- 3.

- 4.
- 5.
- 6.

Room Two

- 1.
- 2.
- 3.
- 4.
- 5.
- 6.

Room Three

- 1.
- 2.
- 3.
- 4.
- 5.
- 6.
- 7.
- 8.
- 9.
- 10.

Room Four

- 1.
- 2.
- 3.
- 4.
- 5.
- 6.
- 7.
- 8.
- 9.
- 10.

Room Five

- 1.
- 2.
- 3.
- 4.
- 5.
- 6.
- 7.
- 8.
- 9.
- 10.

Room Six

- 1.
- 2.
- 3.
- 4.
- 5.
- 6.
- 7.
- 8.
- 9.
- 10.